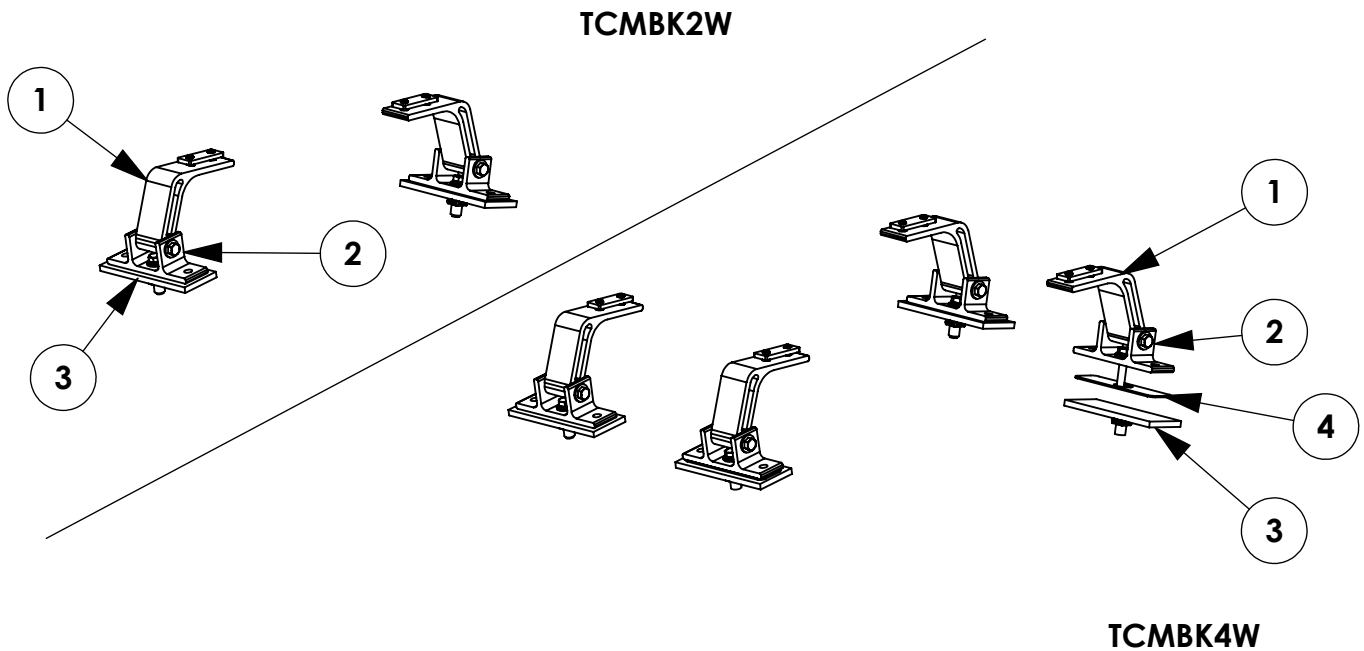


INSTR. NUMBER : 64473	PG: 1	REV: D	ITEM NO.	PART NUMBER	DESCRIPTION	TCMBK4W	TCMBK2W
PART NUMBER : <b>TCMBK</b>			1	68202-W	PROFILE, MOUNTING ARM, W	4	2
			2	63852-W	UTILITY, MOUNTING BRKT, W	4	2
			3	47106	GASKET, FOOT, MR TRANS L/R	4	2
			4	64930	UTILITY, TRANS CON SPACER	2	-
PART DESC. : TC MOUNTING BRKT KIT							

**NOTE: THIS INSTRUCTION IS VALID FOR THE FOLLOWING KITS:**

**-PART NUMBERS WITH "-W" SUFFIX ARE PAINTED WHITE  
-FOR BLACK MOUNTING KITS, REPLACE "-W" PARTS WITH "-B" PARTS**

- TCMBK4W
- TCMBK2W
- TCMBK4B
- TCMBK2B



**GET TO KNOW THE VEHICLE** - AT THE BEGINNING OF ANY INSTALLATION, CHECK THE LOCATION OF THE FUEL TANK, FUEL LINES, BRAKE LINES, HIGH VOLTAGE BATTERIES AND WIRING HARNESES TO AVOID INJURY OR PROPERTY DAMAGE FROM TOOL CONTACT.

**SEAL ALL EXTERIOR HOLES** - ALL INSTALLATION HOLES SHOULD BE SEALED WITH BUTYL TAPE OR SILICON TO PREVENT WATER AND EXHAUST GASES FROM ENTERING THE VEHICLE.

**CONTROL DRILL DEPTH** - TO AVOID DAMAGE TO THE VEHICLE, USE A DRILL STOP OR CLEARED STEP BIT WHEN DRILLING INSTALLATION HOLES.

**ALWAYS ADD PRIMER** - WHEN ADDING INSTALLATION HOLES BE SURE TO USE A SELF-ETCHING PRIMER TO PREVENT CORROSION, FASTENER FAILURE AND INJURY.

**MOUNTING POINTS MUST HAVE METAL-TO-METAL CONTACT** - USE PROVIDED MOUNTING SPACERS TO ACCOMMODATE FOR VEHICLE FEATURES, CARPET OR SUBFLOORS.

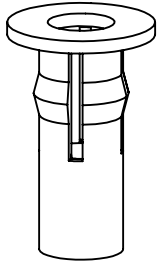
**PROVIDE CLEARANCE FOR SPACERS** - IF THE INSTALLATION VEHICLE CONTAINS A CARPET OR SUBFLOOR, USE A 1-3/16" DIAMETER CARPET CUTTER (P/N: 31183-0) AT ALL MOUNTING LOCATIONS TO OPEN UP ROOM FOR SPACERS.

**CHECK SPACER ORIENTATION** - BE SURE THAT THE INDENT IN THE SPACER COVERS THE PLUSNUT HEAD; THIS ENSURES THE MOST METAL-TO-METAL CONTACT AND REDUCES VIBRATION.

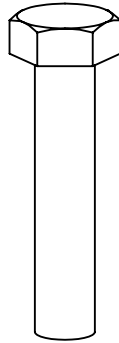
**PLUSNUT INSTALLATION** - A PLUSNUT GUN IS RECOMMENDED FOR PLUSNUT INSTALLATION FOR ITS PRODUCTION SPEED. HOWEVER, A PLUSNUT SETTING TOOL CAN ALSO BE USED (P/N: 22200-0).

**THRU-BOLT CLEARANCE** - WHEN USING A THRU-BOLT AT ANY MOUNTING LOCATION, BE SURE THAT YOUR HOLE HAS 1/16" CLEARANCE.

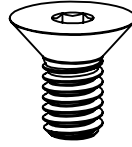
**FASTENERS USED**



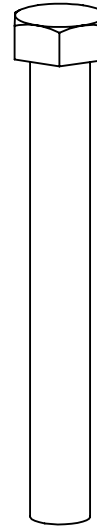
**FAS0091**  
5/16-18 PB  
PLUSNUT  
QTY: 4



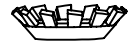
**FAS0242**  
5/16-18X1.5 SS  
HH SCREW  
QTY: 4



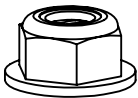
**FAS0858**  
5/16-18 X .625 SS  
FHH SCREW  
QTY: 8



**FAS0243**  
5/16-18X2.5 SS  
HH SCREW  
QTY: 4



**FAS0857**  
5/16 SS, CS  
LCK EXT WASHER  
QTY:8



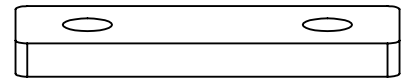
**FAS0861**  
5/16-18 SS  
NLK HEX NUT  
QTY: 4



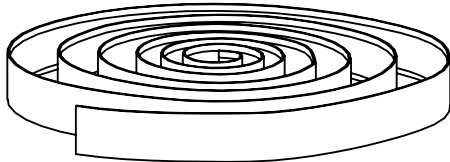
**FAS0552**  
5/16 SS  
FLAT WASHER  
QTY: 8



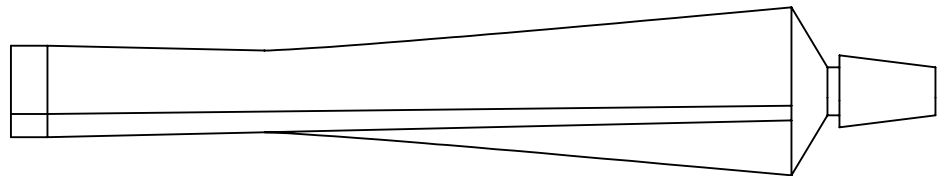
**FAS0588**  
5/16 SS  
SPLIT WASHER  
QTY: 4



**68042**  
PROFILE FOOT  
MTG PLATE  
QTY: 4

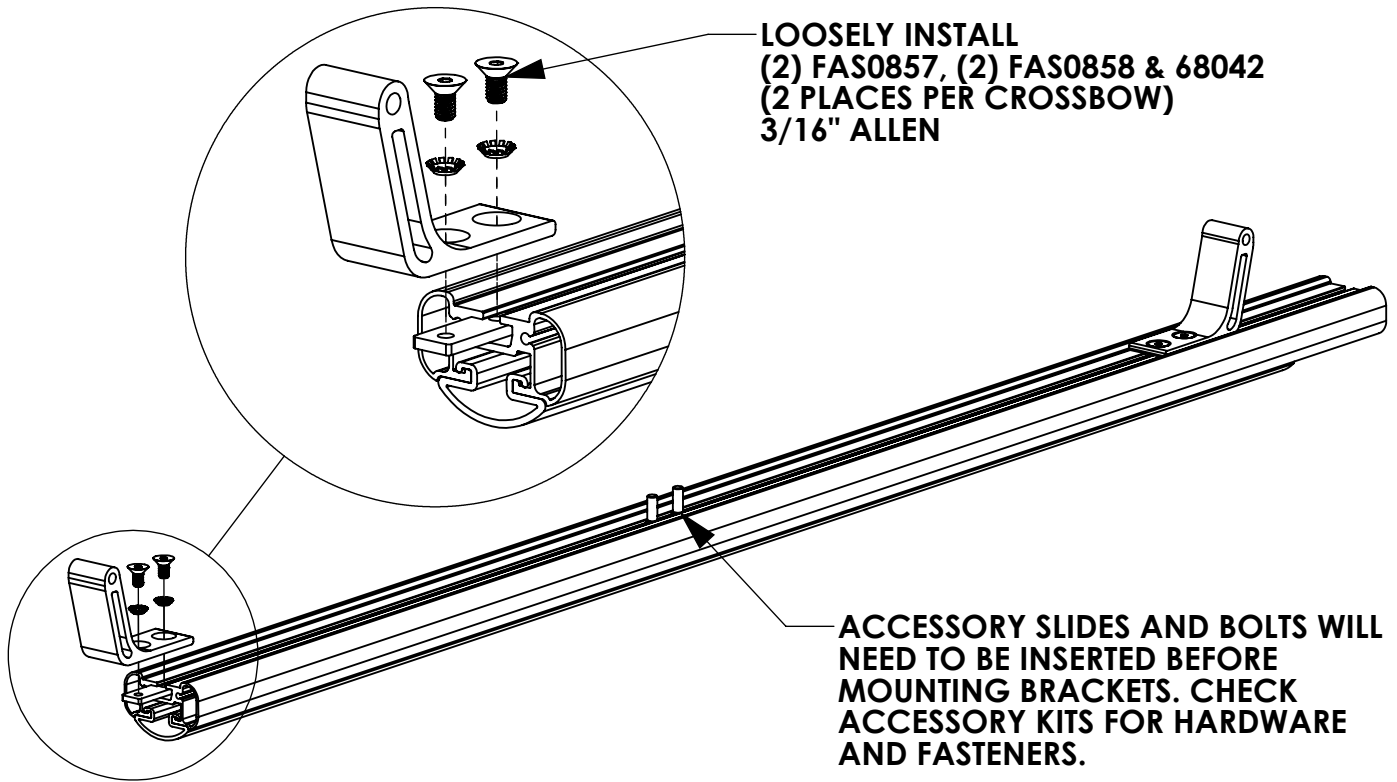


**05586-0**  
BUTYL TAPE  
T224 1FT ROLL  
QTY: 1



**26618-0**  
SILICONE  
1 OZ TUBE  
QTY: 1

**STEP 1 - ASSEMBLE MOUNTING ARMS TO CROSSBOW**



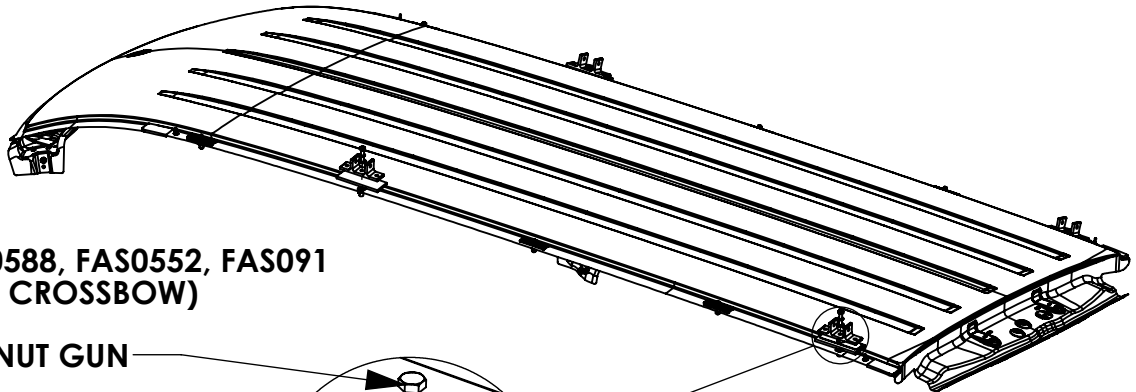
LOOSELY INSTALL  
(2) FAS0857, (2) FAS0858 & 68042  
(2 PLACES PER CROSSBOW)  
3/16" ALLEN

ACCESSORY SLIDES AND BOLTS WILL  
NEED TO BE INSERTED BEFORE  
MOUNTING BRACKETS. CHECK  
ACCESSORY KITS FOR HARDWARE  
AND FASTENERS.

**STEP 2 - INSTALL MOUNTING BRACKETS TO VEHICLE ROOF**

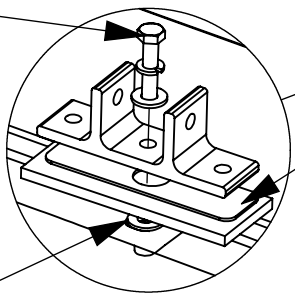
**CROSSBOW POSITIONING NOTES:**

REAR CROSSBOW - REAR OEM MOUNTING LOCATION  
FRONT CROSSBOW - POSITION TO BEST FIT END USER'S PRODUCT



FAS0242, FAS0588, FAS0552, FAS091  
(2 PLACES PER CROSSBOW)  
1/2" SOCKET  
5/16"-18 PLUSNUT GUN

OPEN UP OEM HOLE  
WITH 1/2" DRILL BIT.  
USE A DRILL STOP TO  
PREVENT DAMAGE  
TO MATERIAL UNDER  
HOLE

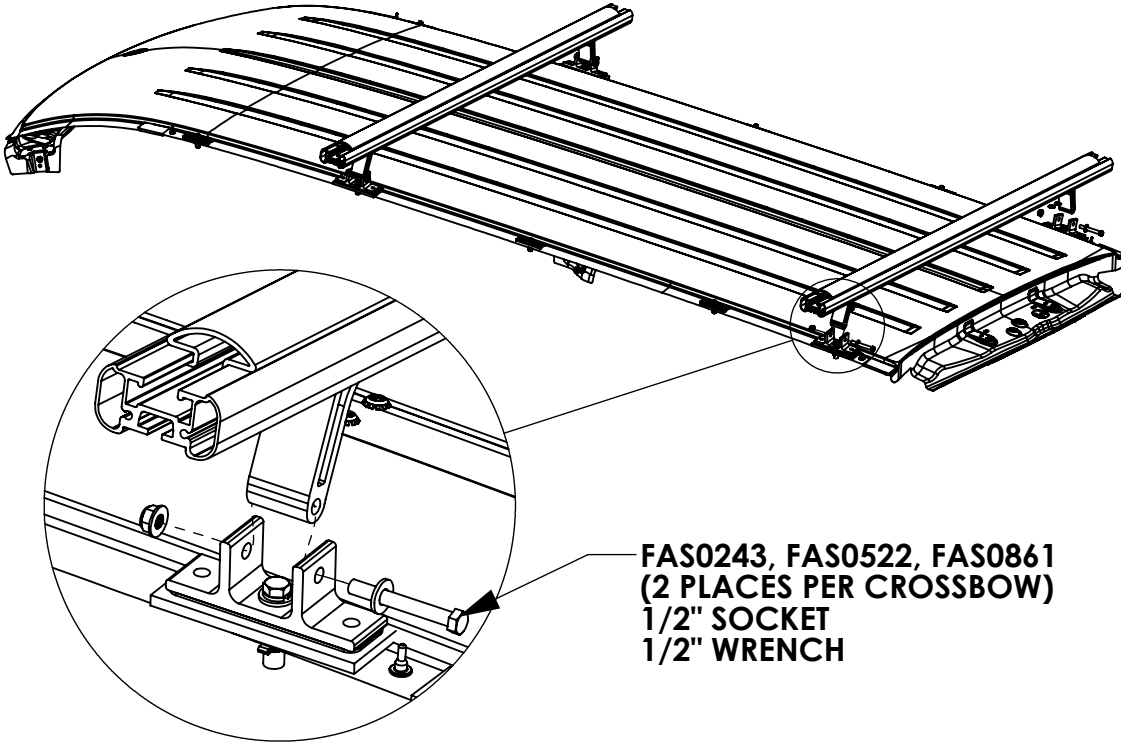


64930 SPACER ONLY USED ON REAR  
CROSSBOW

POKE FASTENERS THRU FOAM PAD

APPLY SILICONE AND BUTLY TAPE TO  
BOLT BEFORE TIGHTENING

**STEP 3 - ATTACH CROSSBOW ASSEMBLY TO MOUNTING BRACKETS**



**STEP 4 - SECURE CROSSBOW**

