

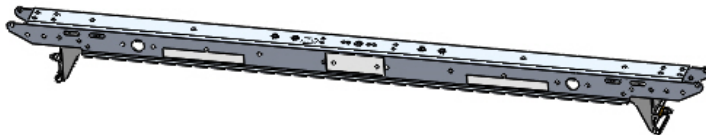
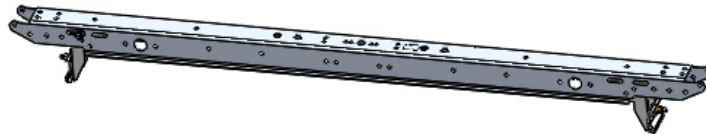
**Introduction / Comments:**

THIS ROOF RAIL AND CROSS BOW KIT IS DESIGNED FOR THE GM FSV, IT IS THE BASE UNIT FOR ALL OF THE LADDER RACK COMBINATIONS FOR THIS VEHICLE. INCLUDING THE SINGLE AND DOUBLE DROP DOWN LADDER RACK, THE SINGLE AND DOUBLE GRIP LOCK, AND THE COMBO GRIP LOCK DROP DOWN LADDER RACK.

**FOR A GM SIDE SLIDER DOOR, PLEASE ORDER A 55075 RISER KIT. THIS IS AVAILABLE UPON REQUEST. THESE FEET RAISE THE GRIP LOCK APPROX 2” AND CLEARS THE SIDE SLIDER DOOR. THIS ALSO COMES WITH A WIND DEFLECTOR AS RAISING THIS RACK CHANGED THE HARMONICS.**

**Note:**

It is advised that all fasteners used in this assembly and installation of this Rack should be checked for tightness at the following intervals: @ 2-weeks and again @ 6-weeks of operation. This preventive maintenance step must be completed to ensure your package gives you long service life.



TO VIEW INSTALL VIDEO



**RRKGMFSV  
ROOF RAIL AND CROSS BOW KIT  
GM FULL SIZE VAN**

## - PRECAUTIONS -





 **CAUTION**   
**THE USE OF AIR IMPACT TOOLS CAN  
OVER-TORQUE FASTENERS AND  
CAUSE FASTENER FAILURE!**



 **CAUTION**   
**ALL INSTALLATION HOLES SHOULD BE SEALED  
WITH SILICON OR BUTYL SEALANT TO PREVENT  
EXHAUST FUMES FROM ENTERING THE VEHICLE!**



 **DANGER**   
**INSPECT FOR FUEL TANK, FUEL LINES, BRAKE LINES, HIGH  
VOLTAGE BATTERIES AND ELECTRICAL LINES PRIOR TO  
DRILLING TO AVOID DAMAGING CRITICAL VEHICLE SYSTEMS  
OR INJURY TO INSTALLER DURING INSTALLATION PROCESS!**



 **CAUTION**   
**TO AVOID DAMAGING THE VEHICLE ALWAYS  
USE DRILL STOPS WHEN DRILLING ANY IN-  
STALLATION HOLES!**



## - IMPORTANT WARRANTY REQUIREMENTS -

1. SUBSTITUTING ADRIAN STEEL SPECIFIED FASTENERS FOR ASSEMBLY AND/OR INSTALLATION WILL VOID YOUR PRODUCT WARRANTY.
2. ALL HOLES DRILLED INTO VEHICLE SHOULD HAVE THE RAW METAL EDGES SEALED WITH A SELF-ETCHING PRIMER TO RESIST CORROSION AND POTENTIAL FASTENER POINT FAILURE.
3. ALL FASTENERS USED IN THE INSTALLATION OF THIS PRODUCT SHOULD BE TIGHTENED TO THE TORQUE(S) SPECIFIED IN THESE INSTRUCTIONS.
4. THESE INSTRUCTIONS SHOULD BE KEPT WITH THE VEHICLE.

### THE BASIC TOOLS NEEDED FOR MOST INSTALLATIONS



DRILL



DRILL BIT WITH  
STOP



RATCHET, SOCKETS  
AND/OR WRENCHES



SCREWDRIVERS

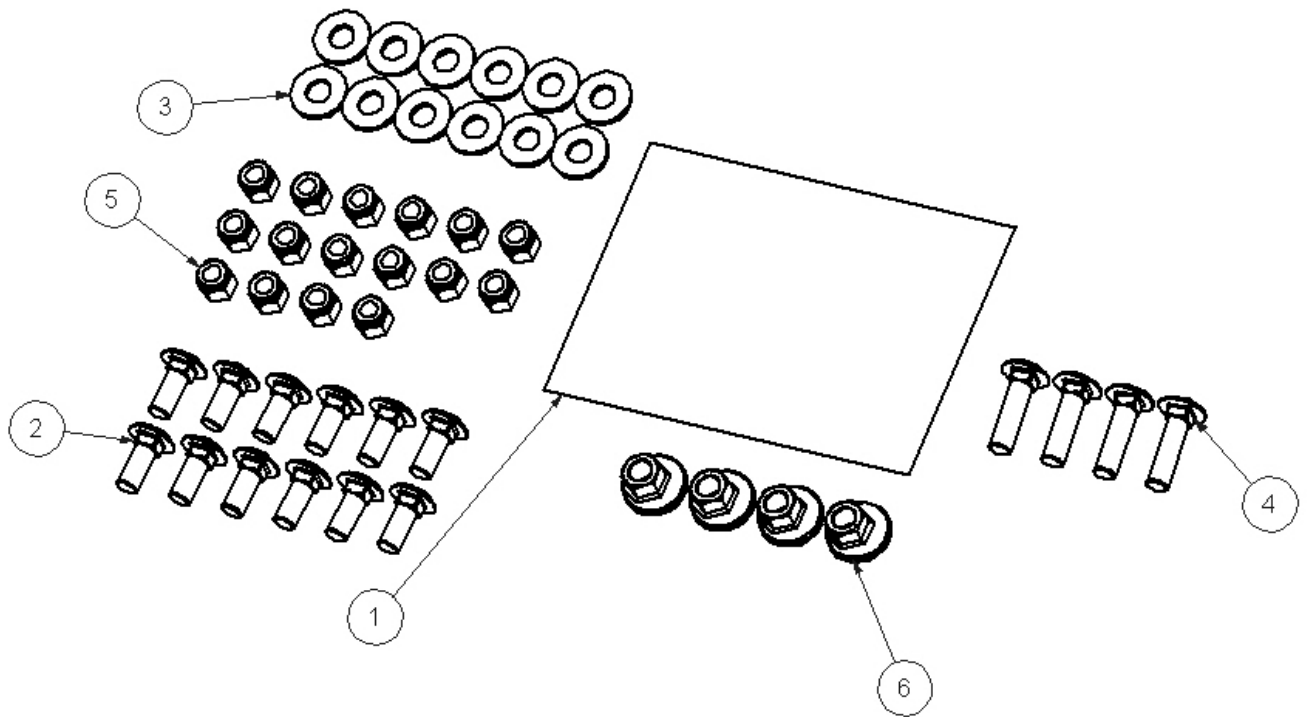


MEASURING TAPE

ADDITIONAL TOOLS MAY BE NEEDED FOR THIS INSTALLATION AND THEY WILL BE IDENTIFIED IN THE STEPS THAT FOLLOW.

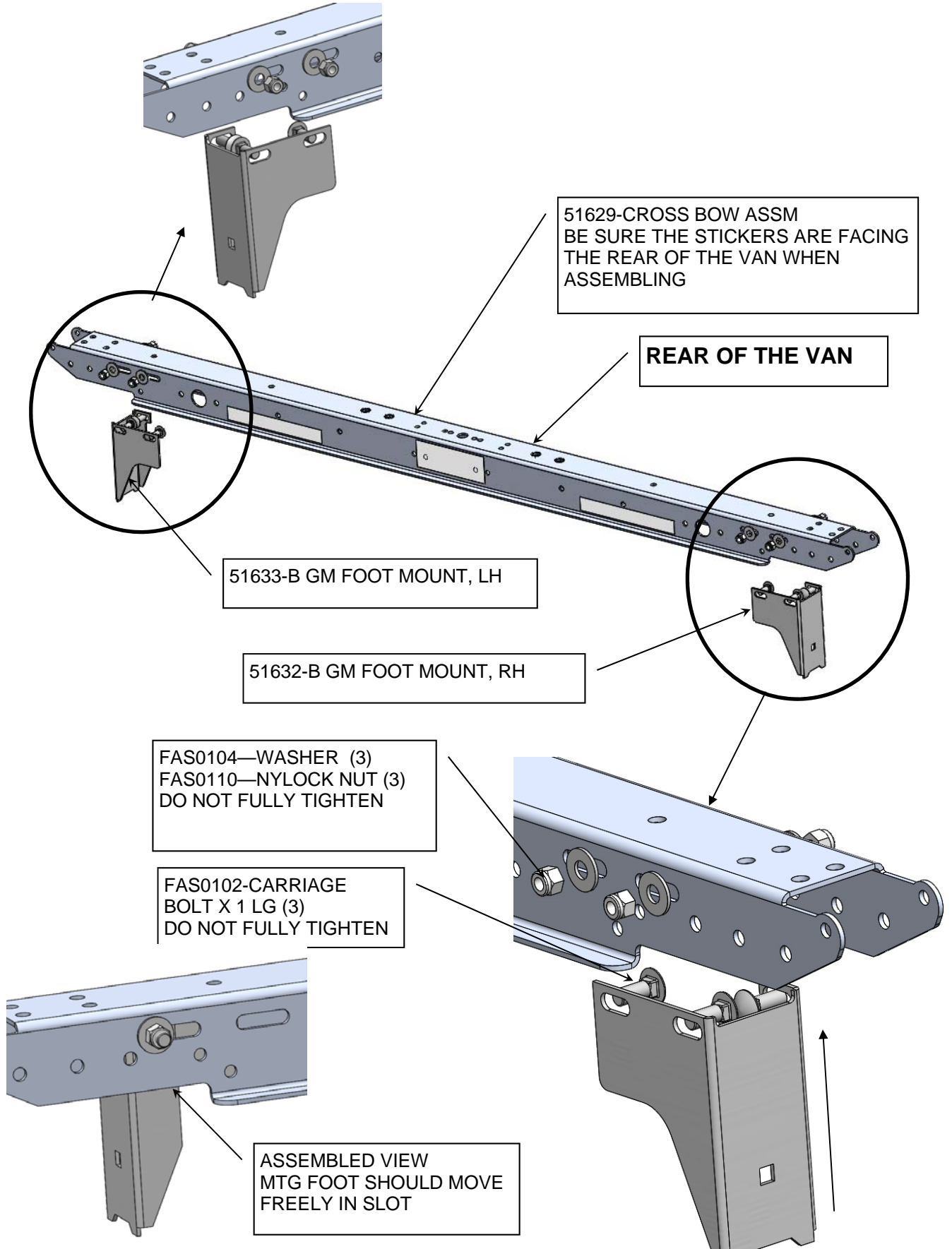
BAG51368 - FASTENER BAG

ITEM NO.	PART NUMBER	DESCRIPTION	QTY.
1	BAG0507-A	5" x 7" 3MIL AUTOBAG	1
2	FAS0102	Bolt, Carriage, 3/8-16x1, NZ G5	12
3	FAS0104	Washer, Flat, 3/8, NI ZN	12
4	FAS0117	Bolt, Carriage, 3/8-16x1.5, NZ, G5	4
5	FAS0110	Nut,Hex Nylk 3/8-16 SS W	16
6	07466-0	ADJUSTING CAM NUT	4



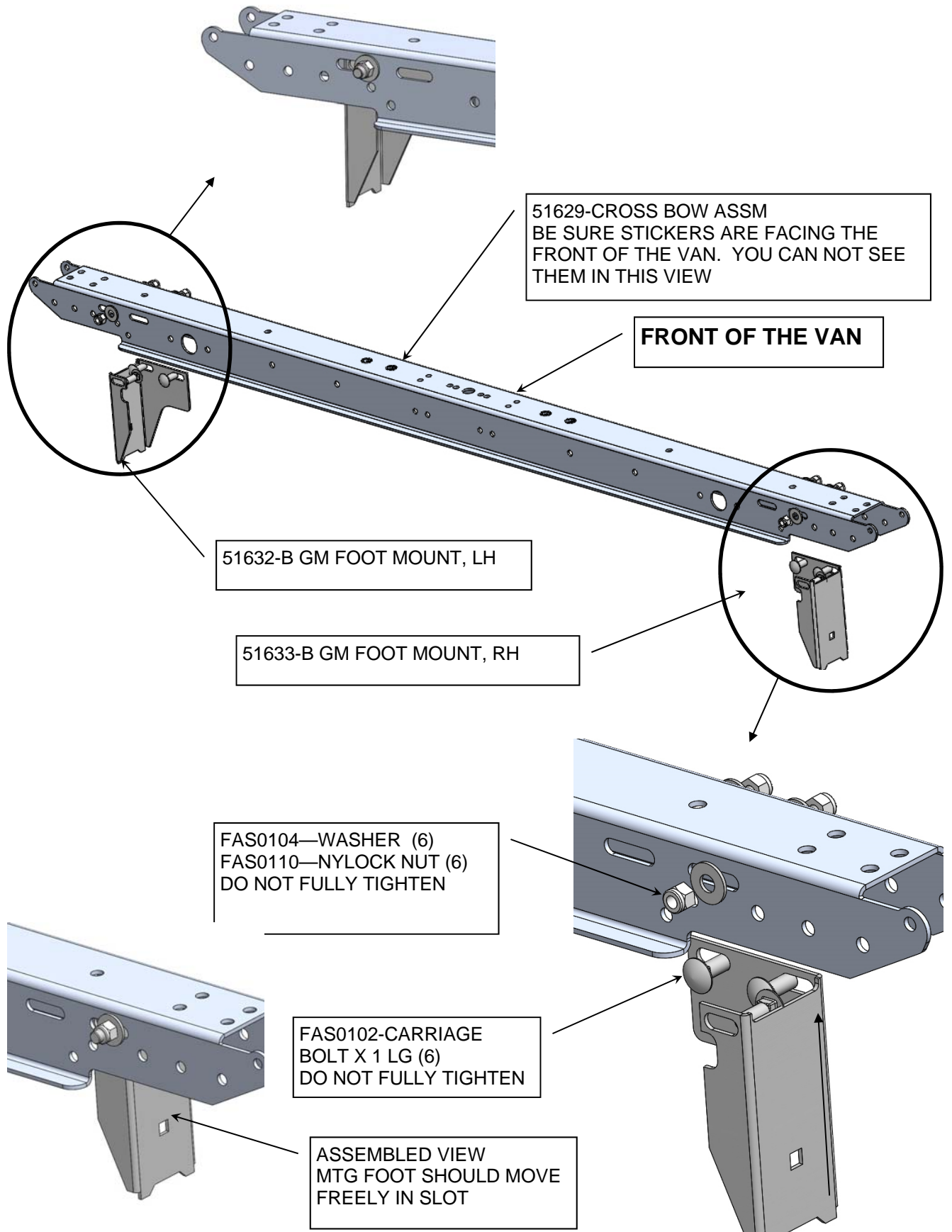


**STEP #1 : ASSEMBLE REAR CROSS BOW**



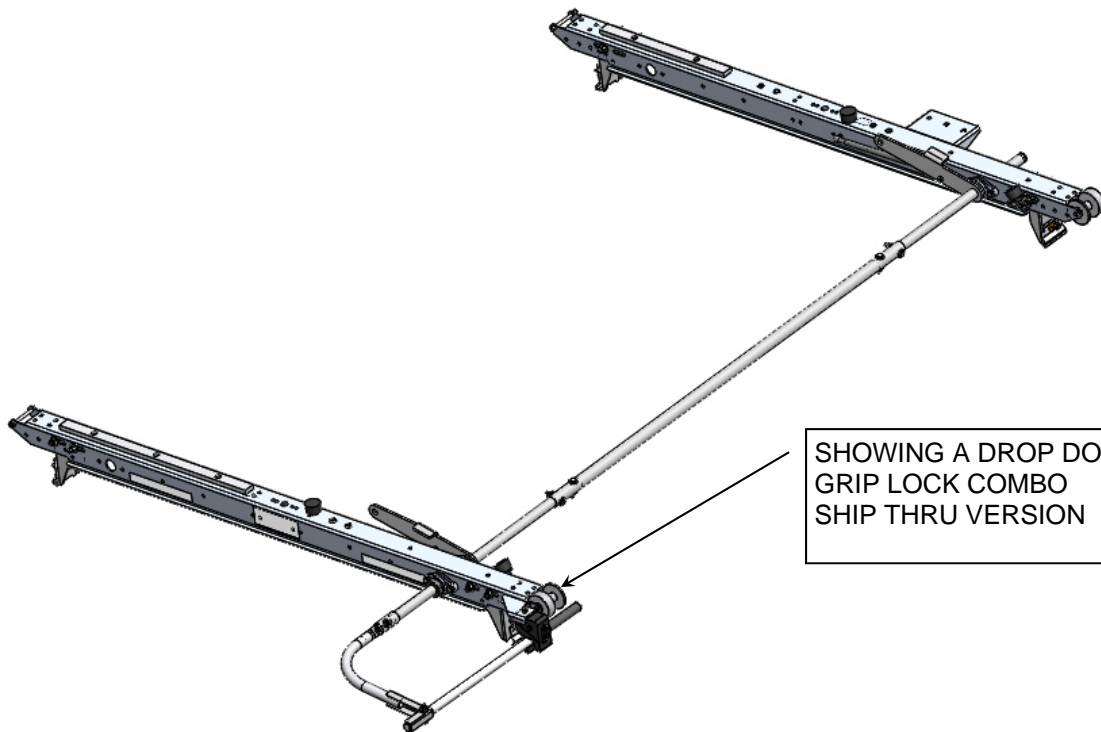


**STEP #2 : ASSEMBLE FRONT CROSS BOW**

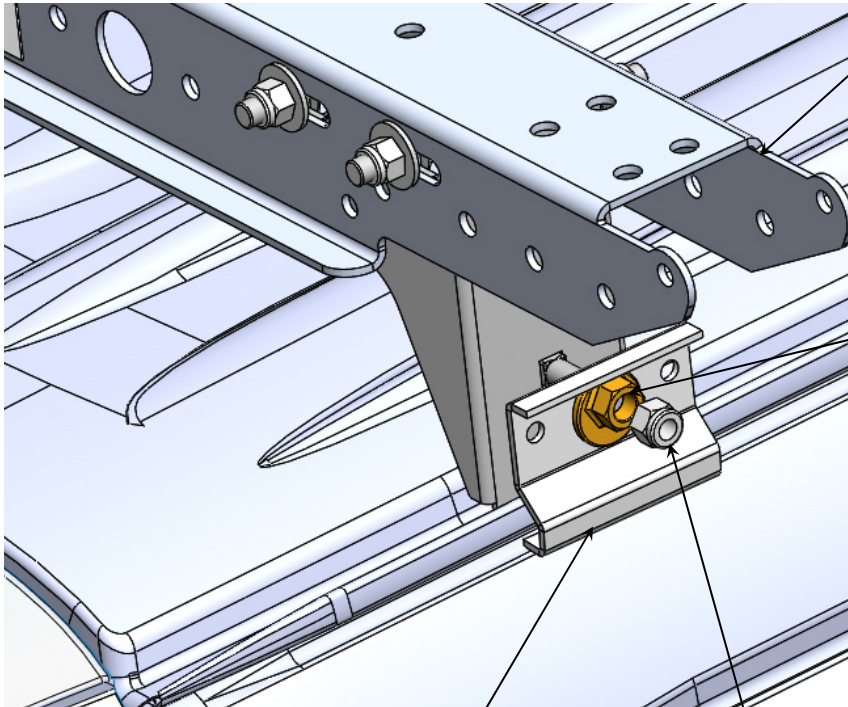




**STEP #3 : FOLLOWING THE DROP DOWN / GRIP LOCK INSTRUCTIONS,  
ASSEMBLE WHAT YOU CAN PRIOR TO INSTALLING ON THE VEHICLE.**



**STEP #4A : LOCATE AND ATTACH REAR CROSS BOW TO THE VEHICLE.**



51629-REAR CROSS BOW ASSM HAS ASCO CENTER STICKER AND TWO SAFETY STICKERS

ROTATE CAM NUT CLOCKWISE TO TIGHTEN THE FOOT CLAMP AGAINST THE DRIP RAIL. NOW FIRMLY TIGHTEN THE 3/8 NYLOCK NUT

22856-B GM FOOT CLAMP

FAS0117—CARRIAGE BOLT(2)  
07466-0—ADJUSTING CAM (2)  
FAS0110—NYLOCK NUT (2)



REAR OF THE VAN

**STEP #5 : LOCATE AND ATTACH FRONT CROSS BOW TO THE VEHICLE.**

