



## MIDSIZE LOAD RUNNER, MSLR2-6FE



PRODUCT WEIGHT  
**48.77 LBS**

WIDTH x DEPTH x HEIGHT  
**62" x 92" x 30"**

CAPACITY  
**See Features Below**

COLOR

**BLACK**

CATALOG NUMBER

**MSLR2-6FE**

### PRODUCT FEATURES

This Mid-Size Loadrunner is designed to fit the 2019 and newer Ford Ranger and GM Colorado/Canyon with 6 foot beds. It features a combination of 1.75" and 1.25" aluminum tubing. The Capacity of the rack exceeds the truck bed wall load rating. Consult your vehicle manufacturer for their recommended rating. Be advised that placing loads above the vehicle bed increases the vehicle's tendency to overturn. Always load with caution.

**SEE PAGE 2 FOR APPLICATION NOTES AND ACCESSORIES, OTHER PRODUCTS THAT WORK WITH THIS UNIT.**

PAGE 1 of 2

The information contained in this document is the sole property of ADRIAN STEEL COMPANY. ADRIAN STEEL COMPANY retains the right to modify and/or change the product of its design at any time without prior notification.



**CATALOG NUMBER      MSLR2-6FE**

***PRODUCT APPLICATION***

**This product is designed to be installed in the 2019– NEWER Ford Ranger and GM Colorado/Canyon with 6 foot beds.**

***ACCESSORIES THAT WILL WORK WITH THIS PRODUCT***

<b><i>CATALOG NUMBER</i></b>	<b><i>DESCRIPTION</i></b>
<b>WG21ML2</b>	<b>WINDOW GUARD, MSLR2</b>
<b>LS5</b>	<b>LADDER STOP KIT,MSLR2</b>
<b>HDW60504</b>	<b>RATCHET STRAP KIT</b>

***SPECIAL APPLICATION NOTES***

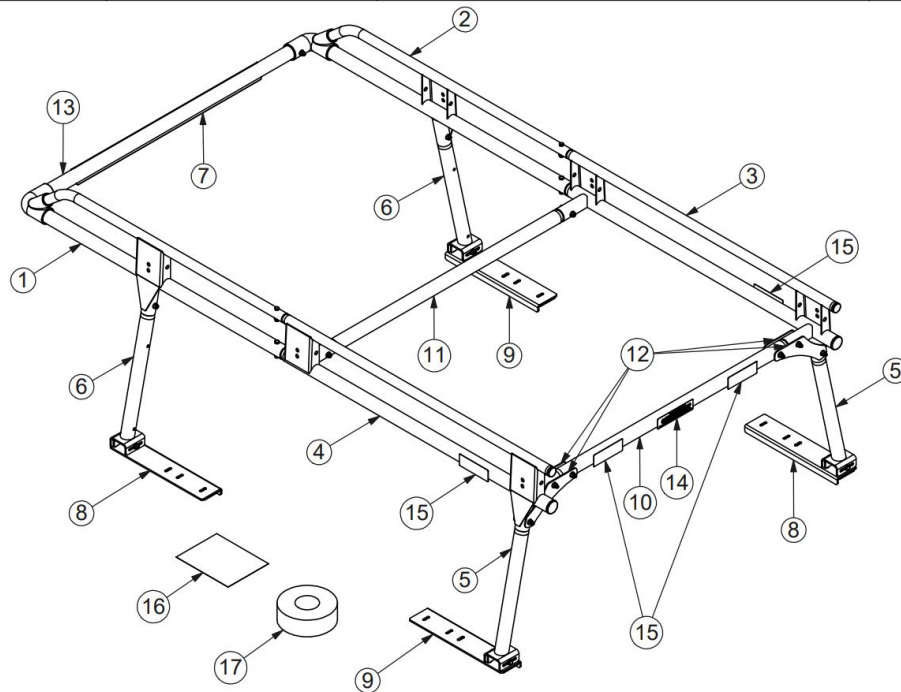
**Introduction / Comments:**

This load runner is manufactured for install fitment on extended cab mid-sized pick-up trucks, Colorado and Ranger, with a 6' bed.

**Note:**

It is advised that all fasteners used in this assembly and installation should be checked for tightness at the following intervals: @ 2-weeks and again @ 6-weeks of operation. This preventive maintenance step must be completed to ensure your Product gives you long service life.

ITEM NO.	PART NUMBER	DESCRIPTION	QTY.
1	63264	MSLR2, SS FRONT TRUSS ASSM	1
2	63269	MSLR2, CS FRONT TRUSS ASSM	1
3	63270	MSLR2, CS REAR TRUSS ASSM	1
4	63274	MSLR2, SS REAR TRUSS ASSM	1
5	63297	MSLR2, REAR CORNER SUPPORT ASSM	2
6	63275	MSLR2, FRONT CORNER SUPPORT ASSM	2
7	63278	MSLR2, WIND DEFLECTOR	1
8	63279	MSLR2, MOUNTING FOOT ASSM, FSS/RCS	2
9	63282	MSLR2, MOUNTING FOOT ASSM, FCS/RSS	2
10	63285	MSLR2, REAR CONNECTOR TRUSS	1
11	63299	MSLR2, CENTER CONNECTOR TRUSS	1
12	63286	MSLR2, LEG JOINING BRACKET	4
13	63287	MSLR2, FRONT CONNECTOR TRUSS	1
14	25689-0	DCL "LOAD RUNNER" PUR	1
15	25637-0	DCL, KDLR, Warning Statement	4
16	BAG63310	BAG FOR MSLR2	1
17	19157-0	FOAM TAPE, 0.25X2.50X192	1



**MSLR2-6FE  
6' EXTENDED CAB**

## - PRECAUTIONS -



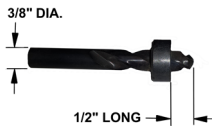
**CAUTION**  
THE USE OF AIR IMPACT TOOLS CAN  
OVER-TORQUE FASTENERS AND  
CAUSE FASTENER FAILURE!



**CAUTION**  
ALL INSTALLATION HOLES SHOULD BE SEALED  
WITH SILICON OR BUTYL SEALANT TO PREVENT  
EXHAUST FUMES FROM ENTERING THE VEHICLE!



**DANGER**  
INSPECT FOR FUEL TANK, FUEL LINES, BRAKE LINES, HIGH  
VOLTAGE BATTERIES AND ELECTRICAL LINES PRIOR TO  
DRILLING TO AVOID DAMAGING CRITICAL VEHICLE SYSTEMS  
OR INJURY TO INSTALLER DURING INSTALLATION PROCESS!



**CAUTION**  
TO AVOID DAMAGING THE VEHICLE ALWAYS USE DRILL  
STOPS WHEN DRILLING ANY INSTALLATION HOLES!  
ADRIAN AVAILABLE PART #'S 31119-0 (3/8" X 1/2"  
DEEP), 31121-0 (1/2" x 1/2" DEEP)



## - IMPORTANT WARRANTY REQUIREMENTS -

1. SUBSTITUTING ADRIAN STEEL SPECIFIED FASTENERS FOR ASSEMBLY AND/OR INSTALLATION WILL VOID YOUR PRODUCT WARRANTY.
2. ALL HOLES DRILLED INTO VEHICLE SHOULD HAVE THE RAW METAL EDGES SEALED WITH A SELF-ETCHING PRIMER TO RESIST CORROSION AND POTENTIAL FASTENER POINT FAILURE.
3. ALL FASTENERS USED IN THE INSTALLATION OF THIS PRODUCT SHOULD BE TIGHTENED TO THE TORQUE(S) SPECIFIED IN THESE INSTRUCTIONS.
4. THESE INSTRUCTIONS SHOULD BE KEPT WITH THE VEHICLE.

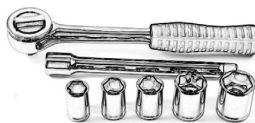
### THE BASIC TOOLS NEEDED FOR MOST INSTALLATIONS



DRILL



DRILL BIT WITH  
STOP



RATCHET, SOCKETS  
AND/OR WRENCHES



SCREWDRIVERS

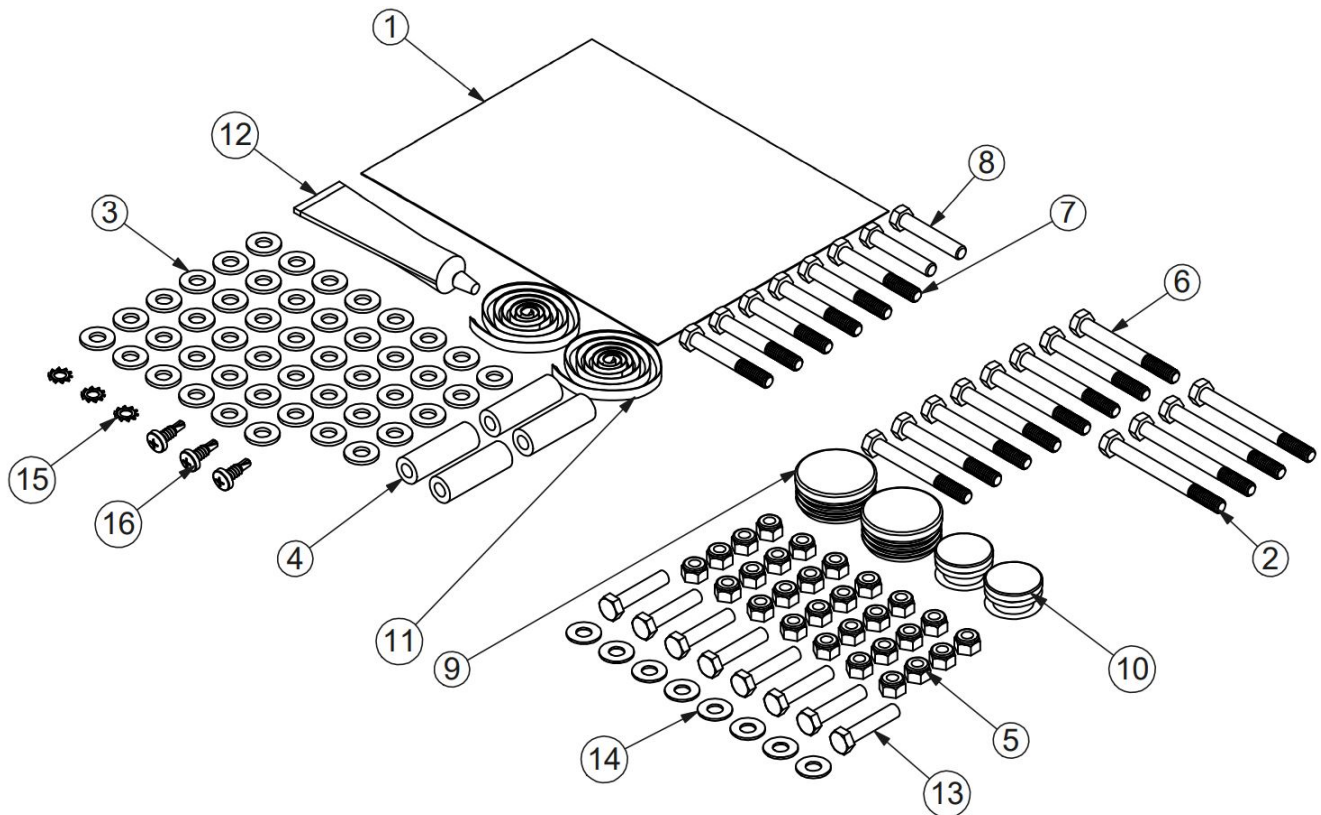


MEASURING TAPE

ADDITIONAL TOOLS MAY BE NEEDED FOR THIS INSTALLATION AND THEY WILL BE IDENTIFIED IN THE STEPS THAT FOLLOW.

**Installation and/or Assembly Fasteners  
BAG63310**

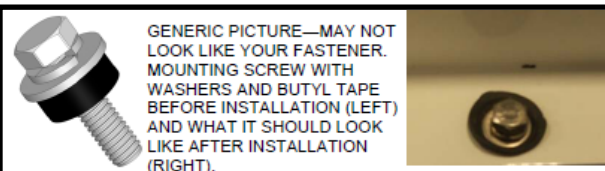
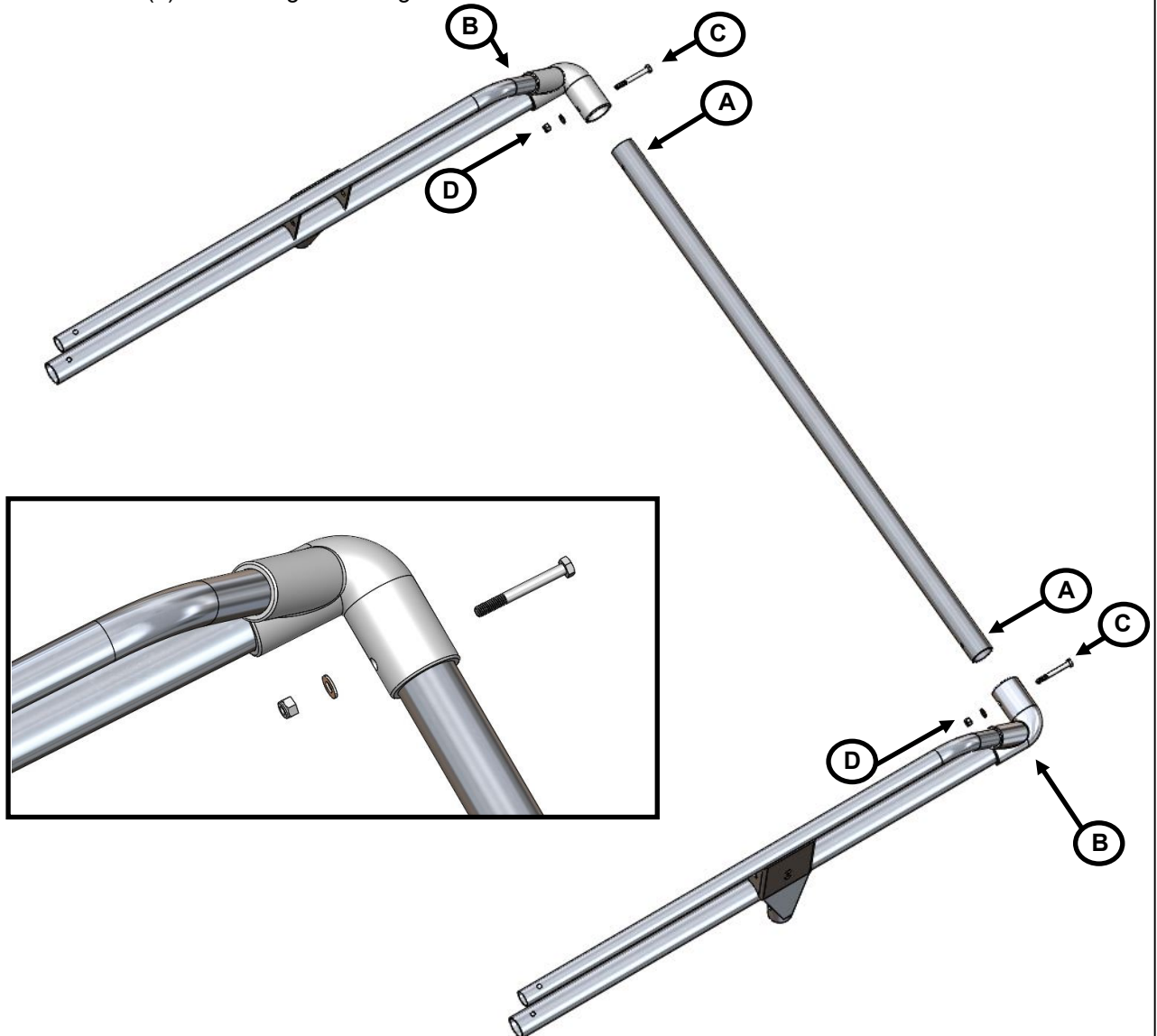
ITEM NO.	PART NUMBER	DESCRIPTION	QTY.
1	BAG0709-A	7" x 9" 3MIL AUTOBAG	1
2	FAS0387	SCREW,HH 5/16-18X3.25 SS	4
3	FAS0552	Washer, Flat, 5/16, SST	46
4	59269	SPACER, STAINLESS STEEL	4
5	FAS0248	Nut, Nylon Insert Lock, 5/16-18 SST	28
6	FAS0427	SCREW,HH 5/16-18X2.75 SS	8
7	FAS0426	SCREW,HH 5/16-18X2.25 SS	6
8	FAS0436	SCREW,HH 5/16/18X0.75 SS	2
9	30892-0	CAP PLUG, RND 1.750 BLK	2
10	37516-0	Cap/Plug 1-1/4" Tube	2
11	05586-0	Butyl Tape, T224 -1/2"X 1' Roll	2
12	26618-0	Silicone Sealant	1
13	FAS0242	Screw, Hex Hd, 5/16-18x1.50 Stainless Steel	8
14	FAS0164	WASHER,FLAT,SAE,5/16,ALUM	8
15	FAS0123	Washer, Lock, Ext. Tooth, 1/4, NI ZN	3
16	FAS0360	SCREW,ST,THP 14-10X.75 SS	3



**Step 01** Assembling the front half of the load runner.

**\*NOTE: APPLY 05586-0 BUTYL TAPE AROUND BOTH ENDS OF EVERY FASTENER BEFORE TIGHTENING!\***

- A) Using the silicone sealant 26618-0, run a bead around each end of the 63287 tube before inserting.
- B) Push 63264 and 63269 onto the ends of 63287, ensuring both of the holes line up.
- C) Insert each (2) FAS0427 bolt through each of the holes.
- D) Place (1) FAS0552 washer on each (2) bolt and thread (1) FAS0248 lock nut on each (2) bolt and tighten using a 1/2" & 9/16" socket.



GENERIC PICTURE—MAY NOT LOOK LIKE YOUR FASTENER. MOUNTING SCREW WITH WASHERS AND BUTYL TAPE BEFORE INSTALLATION (LEFT) AND WHAT IT SHOULD LOOK LIKE AFTER INSTALLATION (RIGHT).

**NOTE:**  
Components may be difficult to be joined together and can be tapped together with a rubber mallet to assist with assembly. For assistance with aligning holes, a 10" drift punch may be used.

**Step 02** Assembling the rear half of the load runner.

**\*NOTE: APPLY 05586-0 BUTYL TAPE AROUND BOTH ENDS OF EVERY FASTENER BEFORE TIGHTENING!\***

A) Using the silicone sealant 26618-0, run a bead around each end of both the 63299 tube and the 63285 tube before inserting.

B) Push 63274 and 63270 onto the ends of 63299 and 63285, ensuring all of the holes line up.

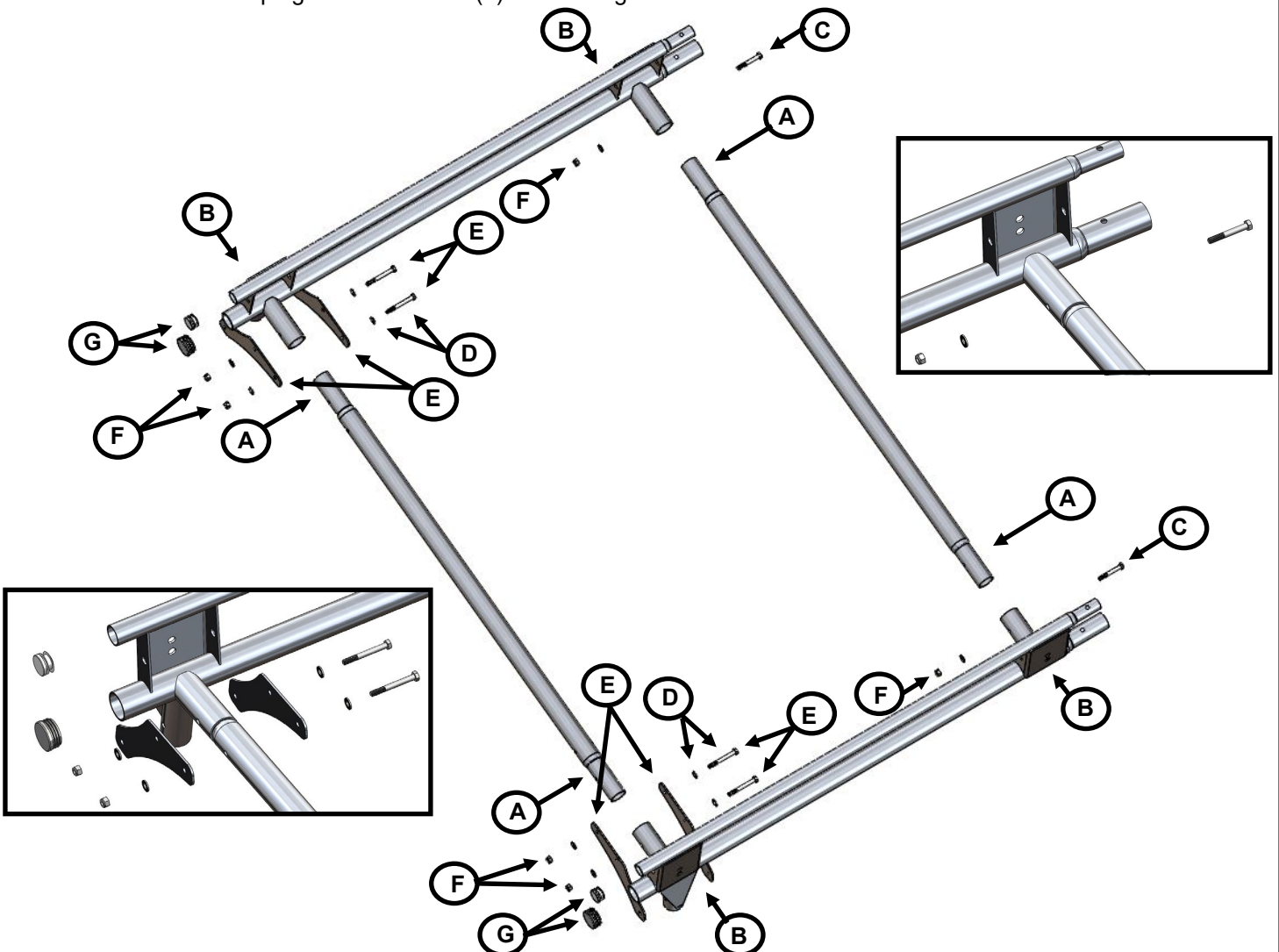
C) Insert each (2) FAS0426 bolt through the holes.

D) Place (1) FAS0552 washer on each (4) FAS0426 bolt.

E) Position (2) of 63286 on each side of rear of 63274 and 63270, lining up the (3) holes, and insert bolts through the top (2) holes.

F) Place (1) FAS0552 washer on each (6) bolt and thread (1) FAS0248 lock nut on each (6) bolt and tighten front (2) using a 1/2" & 9/16" socket, leaving rear (4) loose until step 4G.

G) Push (1) 37516-0 tube plug on rear of each (2) top small tube, and (1) 30892-0 tube plug on rear of each (2) bottom large tube.



**Step 03** Joining the front half and the rear half of the load runner together.

**\*NOTE: APPLY 05586-0 BUTYL TAPE AROUND BOTH ENDS OF EVERY FASTENER BEFORE TIGHTENING!\***

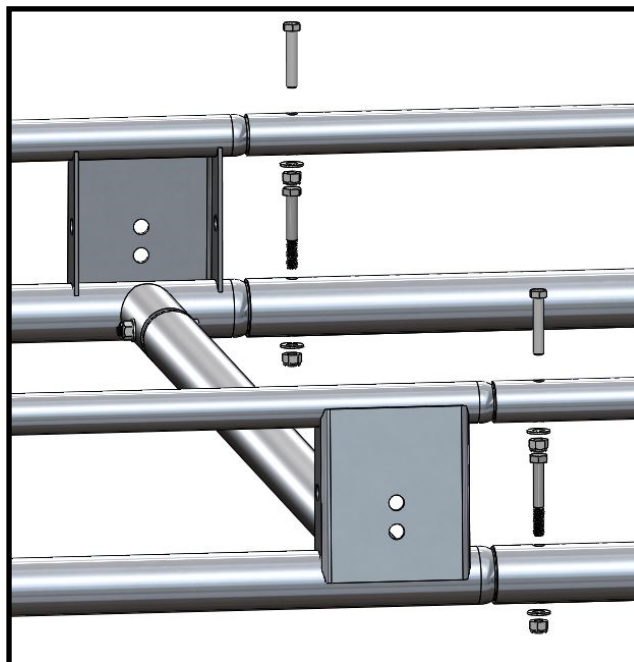
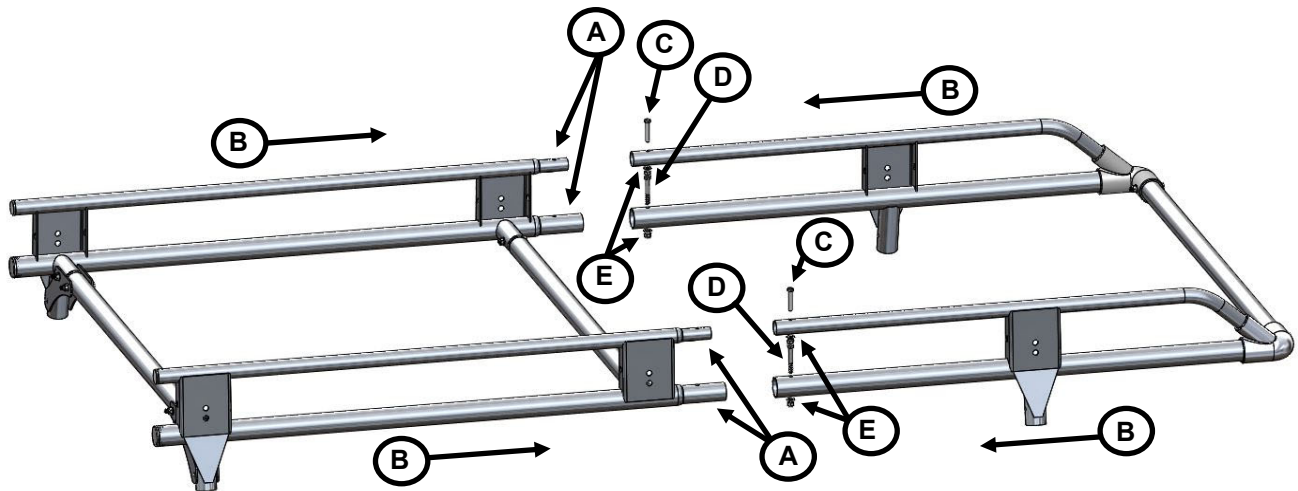
A) Using the silicone sealant 26618-0, run a bead around the end of both the top and bottom tube of 63274 and 63270 before inserting into 63264 and 63269.

B) Push the front half and rear half of the ladder rack together, ensuring that the holes are lined up on both sides.

C) Insert each (2) FAS0436 bolt through the holes.

D) Insert each (2) FAS0426 bolt through the holes.

E) Place (1) FAS0552 washer on each (4) bolt and thread (1) FAS0248 lock nut on each (4) bolt and tighten using a 1/2" & 9/16" socket.





**Step 04** Attaching the corner posts to the load runner.

**\*NOTE: APPLY 05586-0 BUTYL TAPE AROUND BOTH ENDS OF EVERY FASTENER BEFORE TIGHTENING!\***

A) Using the silicone sealant 26618-0, run a bead around the top of the (2) 63275 front tubes and the (2) 63297 rear tubes before inserting.

B) Push (1) 63297 (WITH 1 BOLT HOLE) into 63274 on rear, and (1) 63297 (WITH 1 BOLT HOLE) into 63270 on rear, with them angling outwards to steetside and curbside, ensuring all of the holes line up.

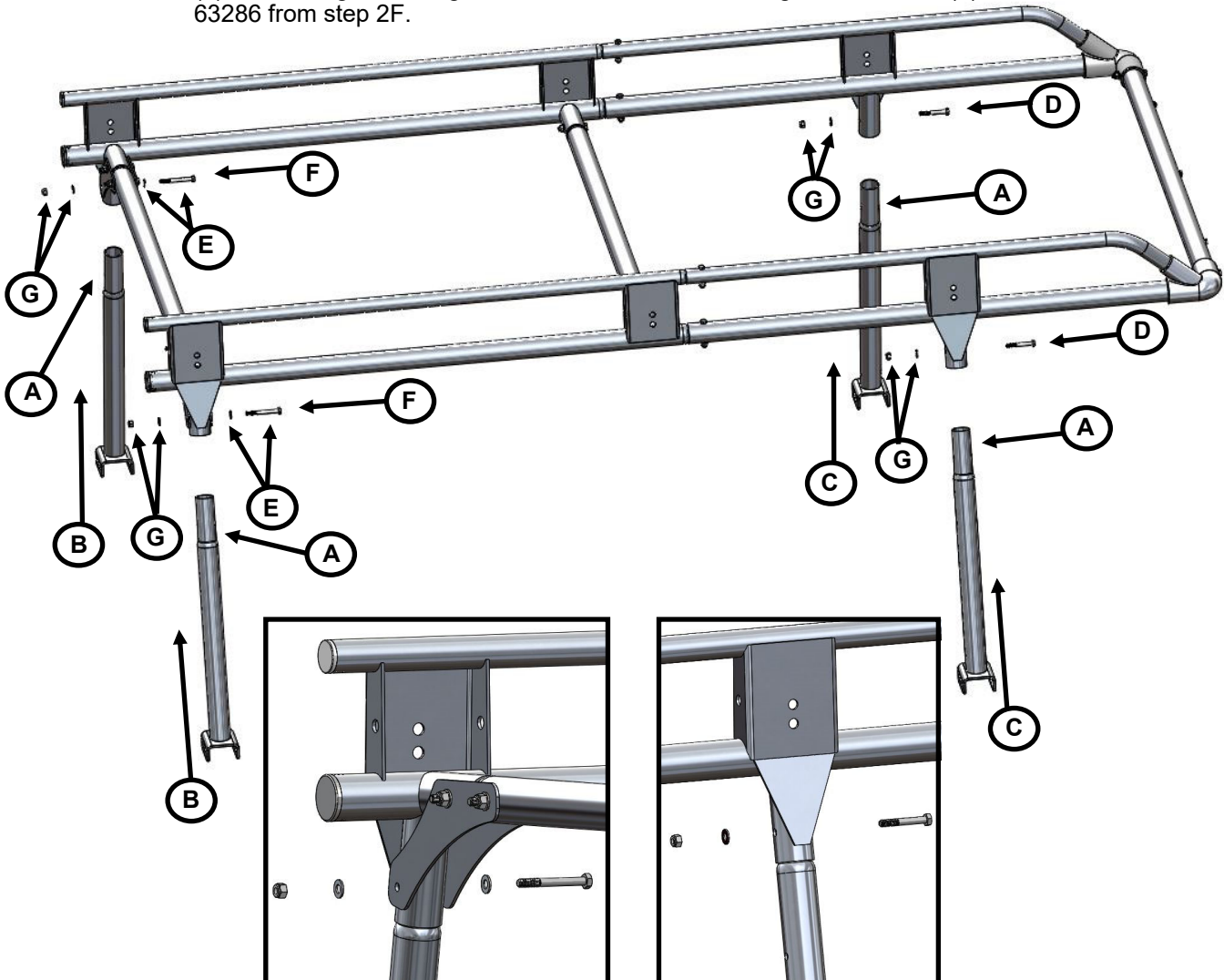
C) Push (1) 63275 (WITH 3 BOLT HOLES) into 63264 on front, and (1) 63275 (WITH 3 BOLT HOLES) into 63269 on front, with them angling outwards to steetside and curbside, ensuring all of the holes line up.

D) Insert each (2) FAS0426 bolt through the holes.

E) Place (1) FAS0552 washer on each (2) FAS0427 bolt.

F) Insert bolts through the bottom hole of each (4) 63286.

G) Place (1) FAS0552 washer on each (4) bolt and thread (1) FAS0248 lock nut on each (4) bolt and tighten using a 1/2" & 9/16" socket. Also, tighten the other (4) fasteners on 63286 from step 2F.



**Step 05** Attaching the wind deflector.

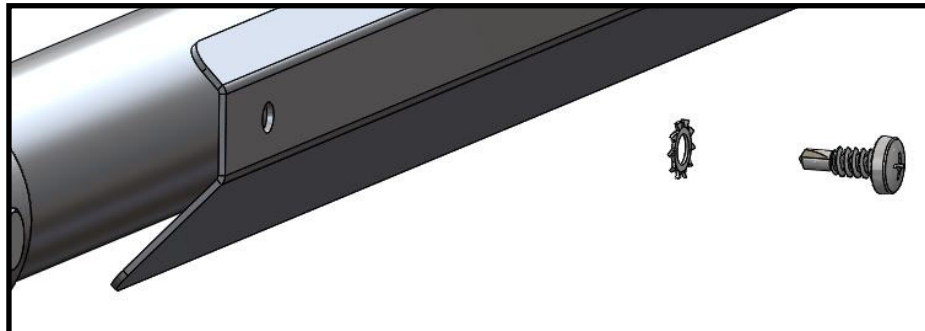
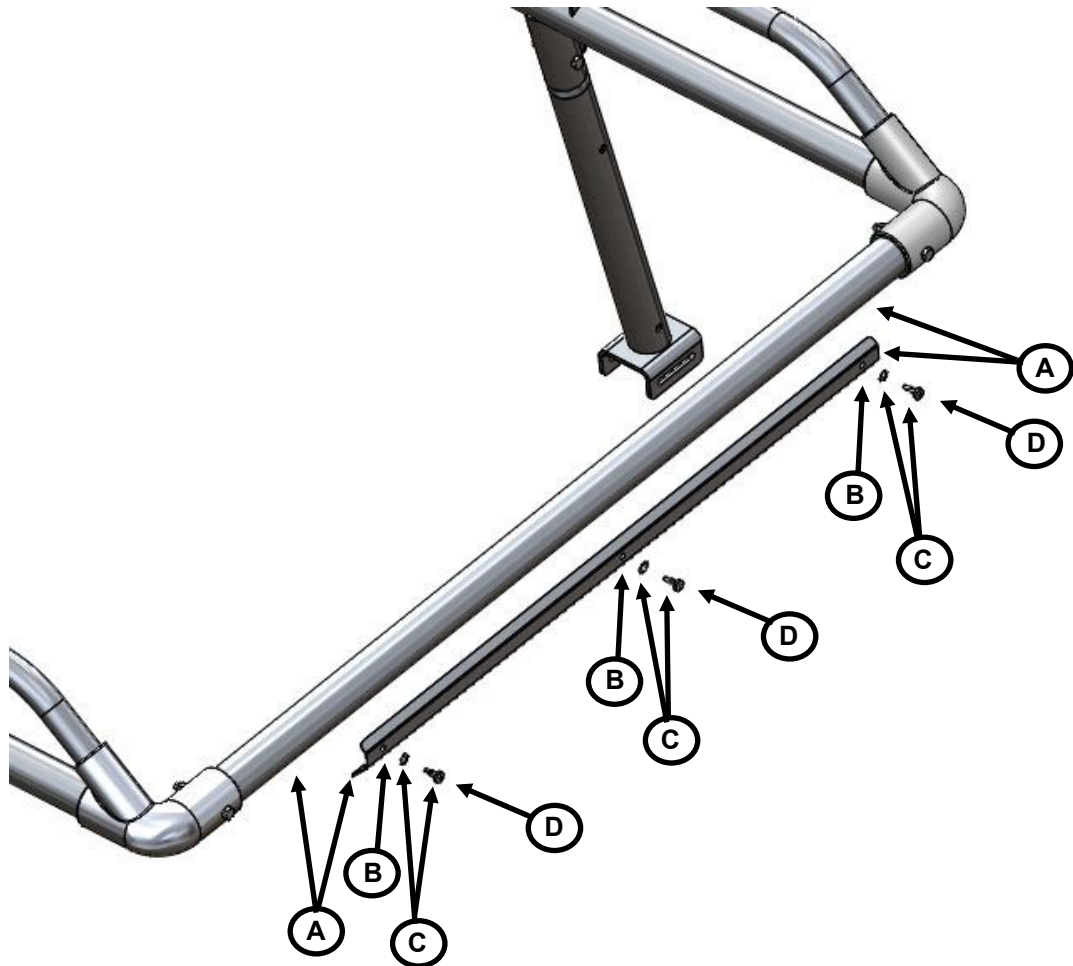
**\*NOTE: APPLY 05586-0 BUTYL TAPE AROUND BOTH ENDS OF EVERY FASTENER BEFORE TIGHTENING!\***

A) Position 63278 against 63287 and centered. The center flat of 63278 should be perpendicular to the ground, with the longer flat towards ground.

B) While holding in place, center punch the (3) hole locations on 63287, set aside, then pilot drill the (3) holes with a 3/16" diameter drill bit on 63287.

C) Place (1) FAS0123 lock tooth washer on each (3) FAS0360 screw.

D) Position 63278 against 63287 with holes lined up in orientation listed in 5A, and tighten each (3) screw using a Phillip's driver.



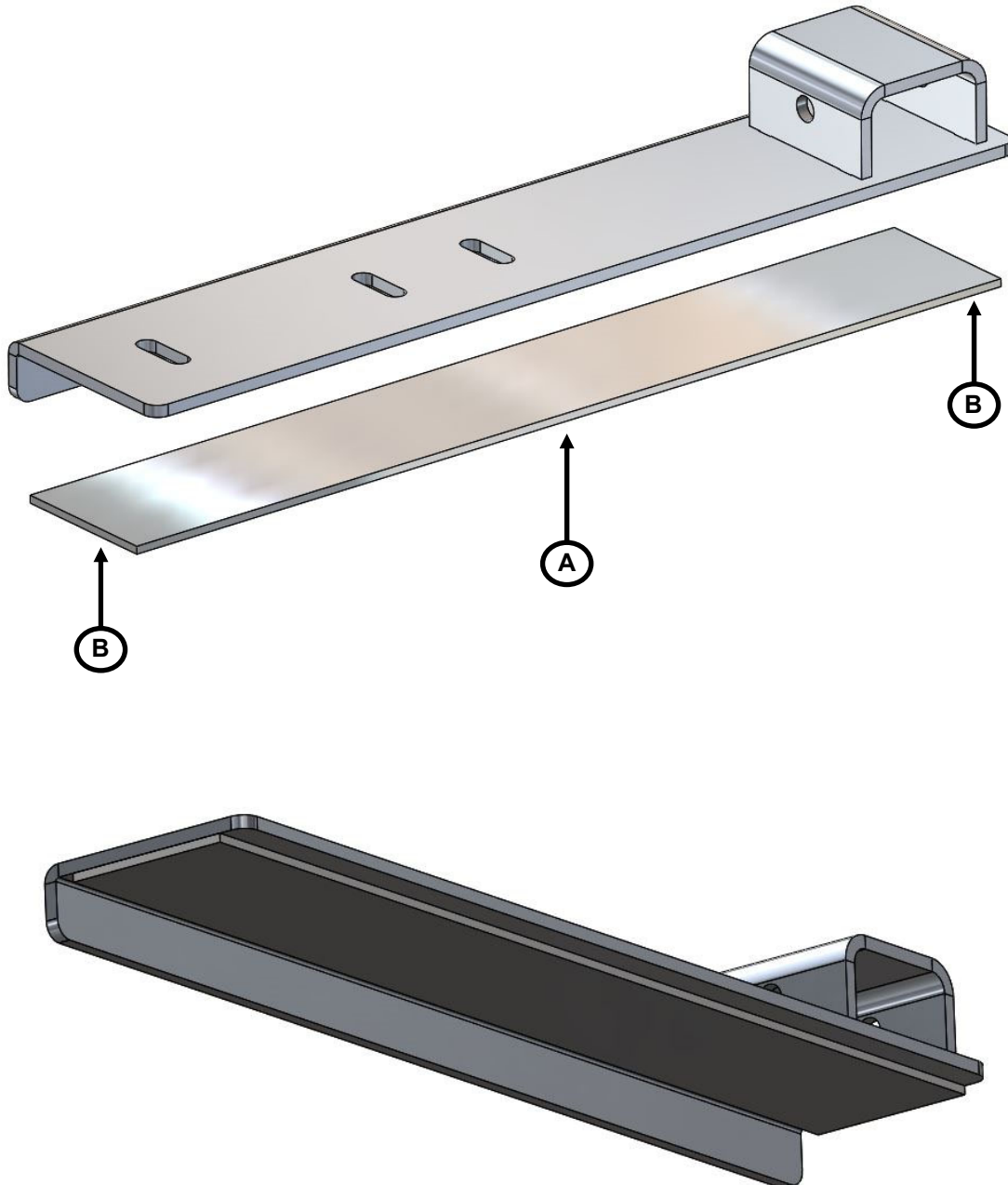
**Step 06** Build complete, ensure all fasteners have been tightened before mounting.



**Step 07** Applying a foam strip to each mounting foot.

A) Cut (4) strips of foam from the 19157-0 roll, each being 16" long.

B) Stick (1) strip to each (2) 63279 and each (2) 63282, starting at one end and centering.

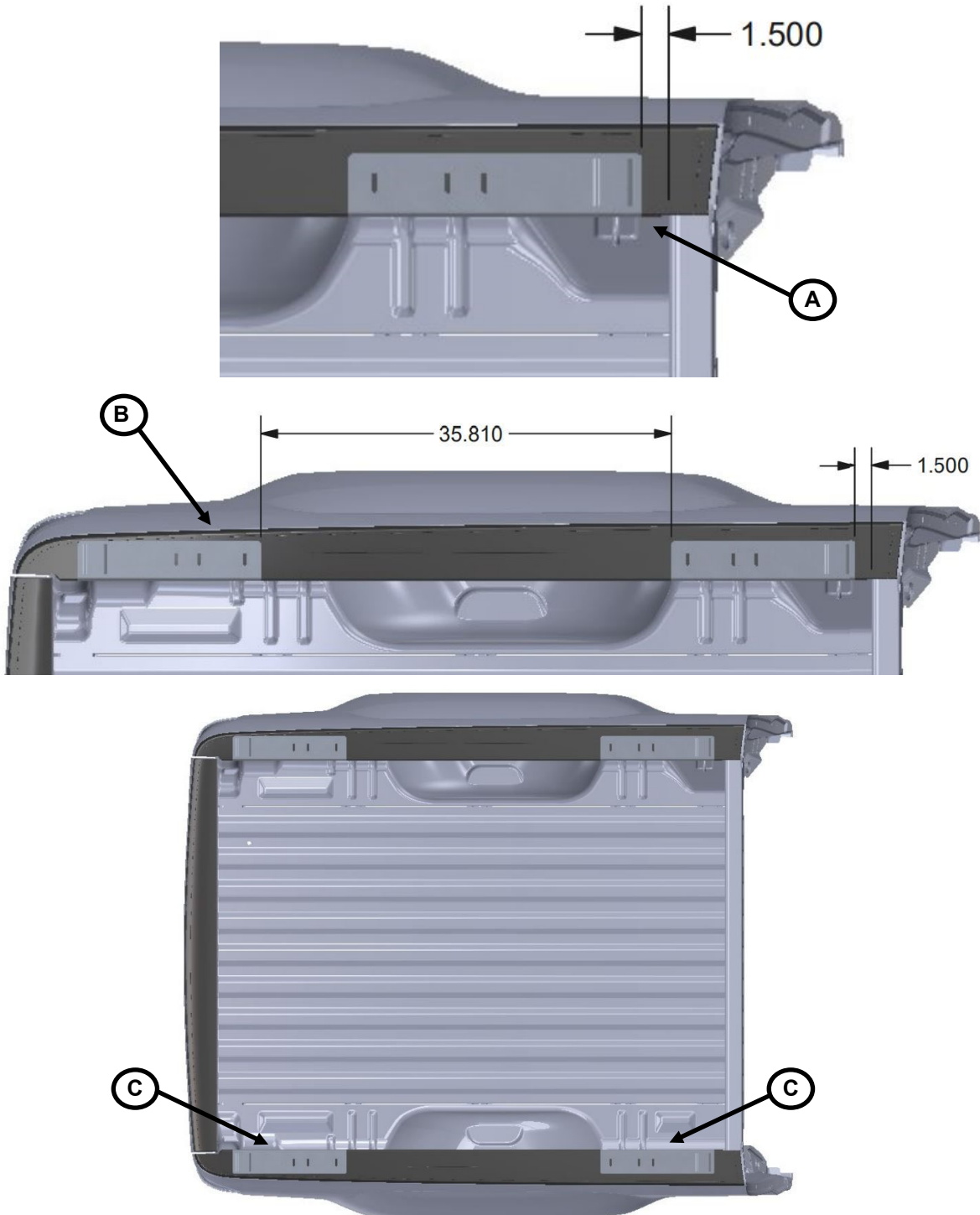


**Steps 08 - 10 for COLORADO only**

**Steps 11 - 13 for RANGER only**

**Step 08** Positioning each mounting foot on the bed rails of **COLORADO**.

- A) Measuring from the front bed rail inside edge to the front end edge of 63279 on SS, position 1.500" away on SS bed rail and stick down.
- B) From rear end edge of 63279 to front end edge of 63282, position 35.810" away on SS bed rail and stick down.
- C) Repeat these steps for the CS bed rail.



**Step 09** Drilling the mounting holes through the bed rails of COLORADO.

A) Using a 21/64" diameter drill bit, drill a thru-hole centered in each end slot on each mounting foot. Skip the center slots.

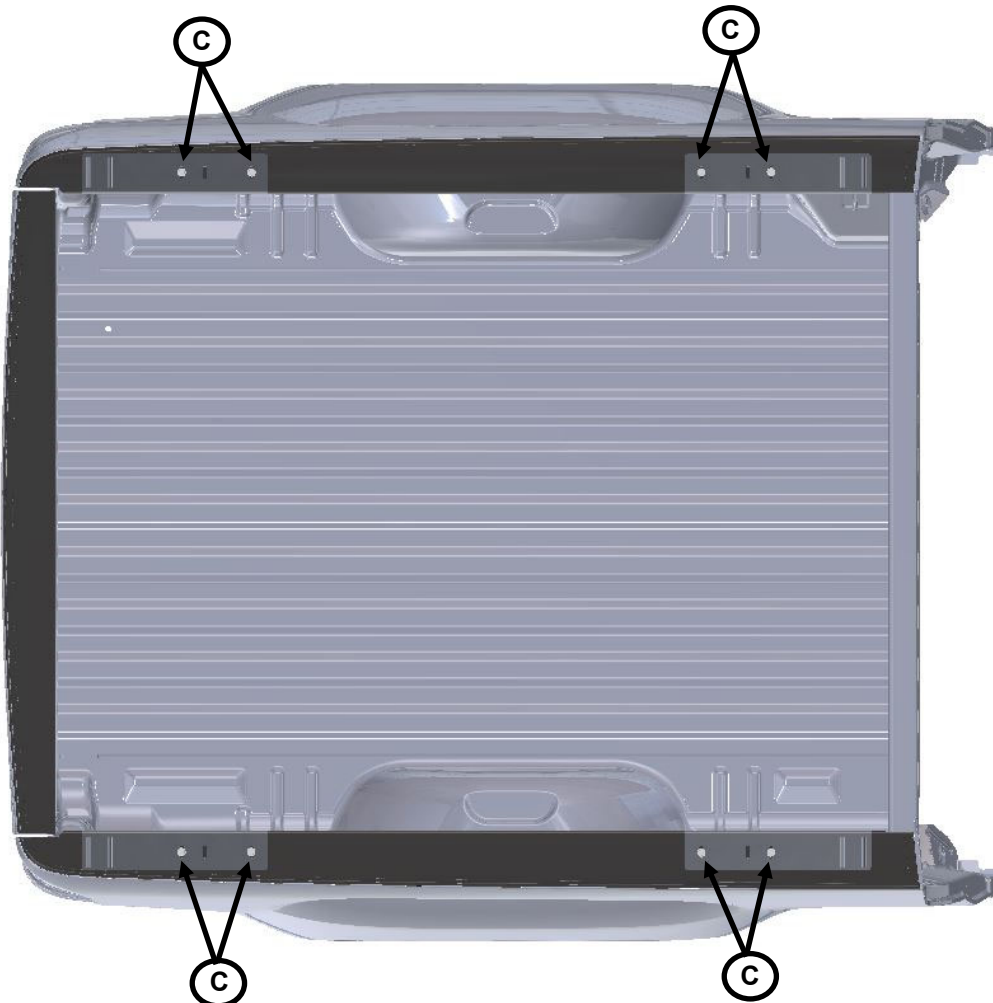
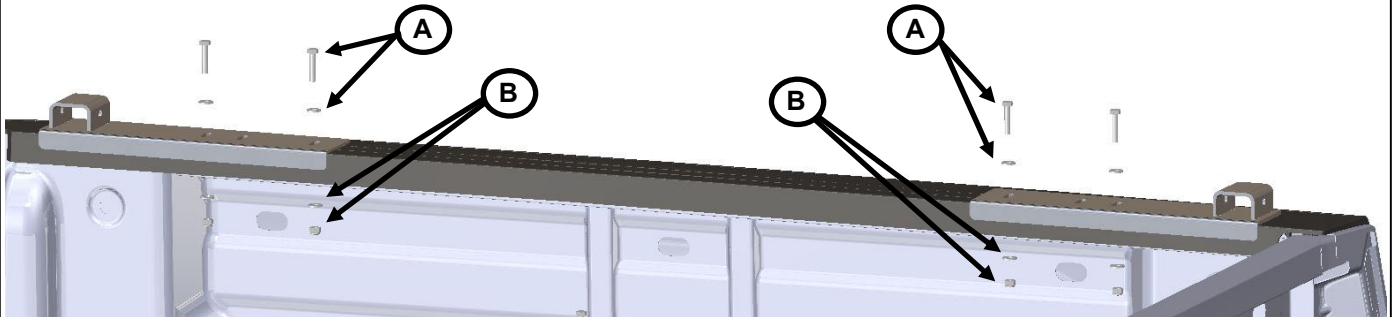


**Step 10** Bolting the mounting feet to the bed rails of COLORADO.

A) Place (1) FAS0552 washer on each (8) FAS0242 bolt and insert bolts through the drilled holes.

B) Place (1) FAS0552 washer on each (8) bolt and thread (1) FAS0248 lock nut on each (8) bolt and tighten using a 1/2" & 9/16" socket.

C) Ensure all (4) mounting feet are tightened to the bed rails.



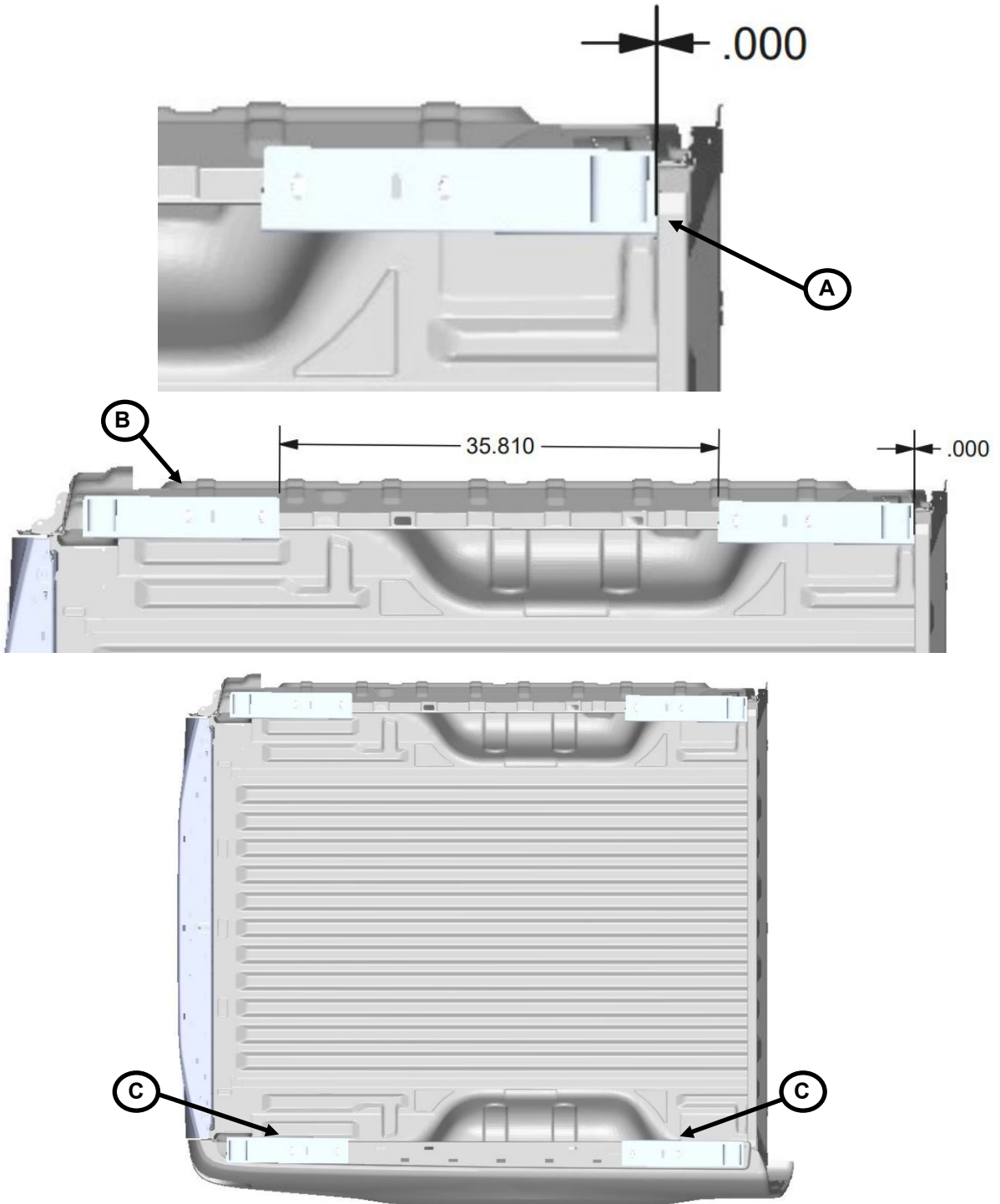




**Steps 11 - 13 for RANGER only**

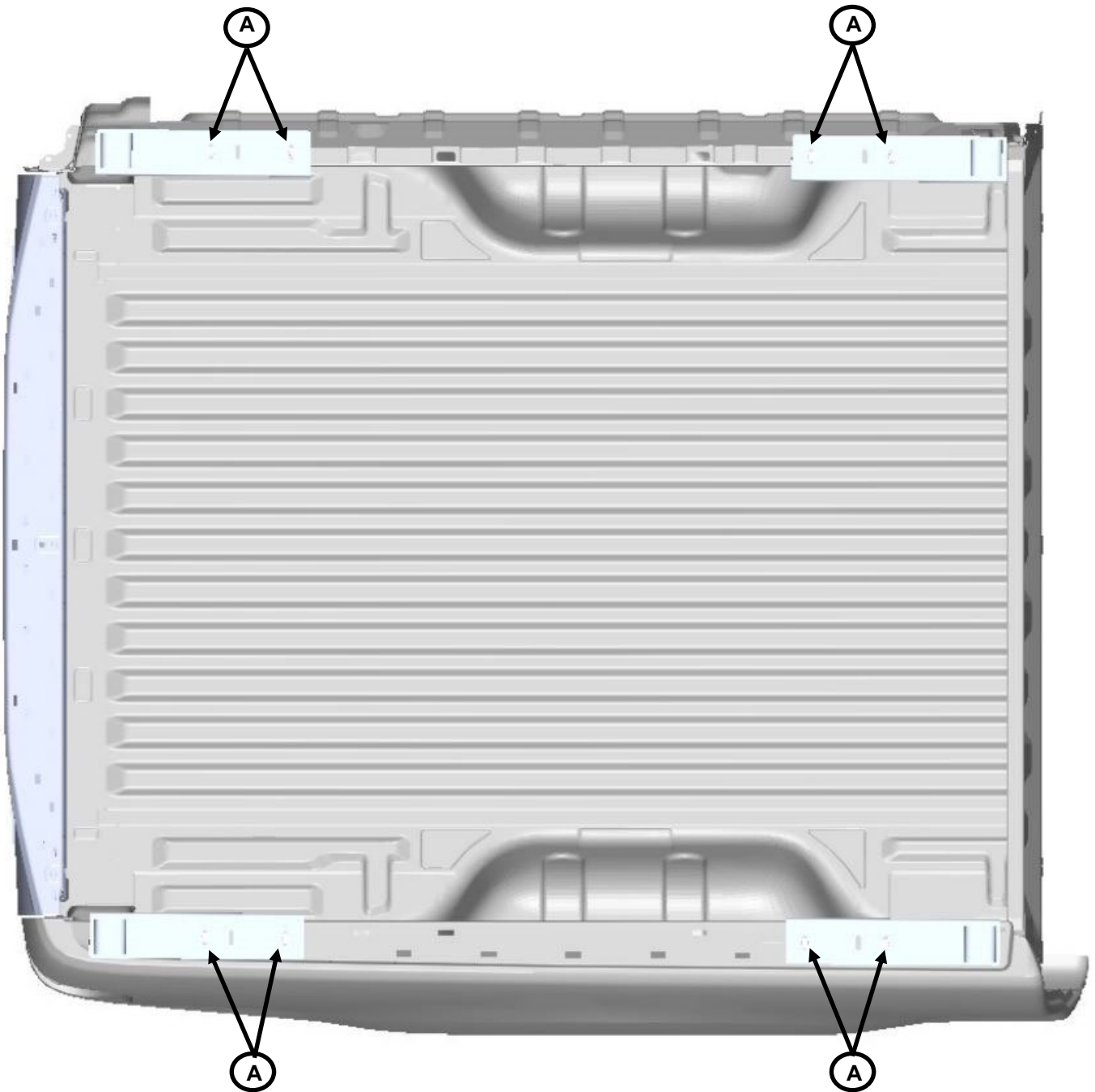
**Step 11** Positioning each mounting foot on the bed rails of RANGER.

- A) Measuring from the front bed rail inside edge to the front end edge of 63279 on SS, position 0.000" away on SS bed rail and stick down.
- B) From rear end edge of 63279 to front end edge of 63282, position 35.810" away on SS bed rail and stick down.
- C) Repeat these steps for the CS bed rail.



**Step 12** Drilling the mounting holes through the bed rails of RANGER.

A) Using a 21/64" diameter drill bit, drill a thru-hole centered in each end slot on each mounting foot. Skip the center slots.

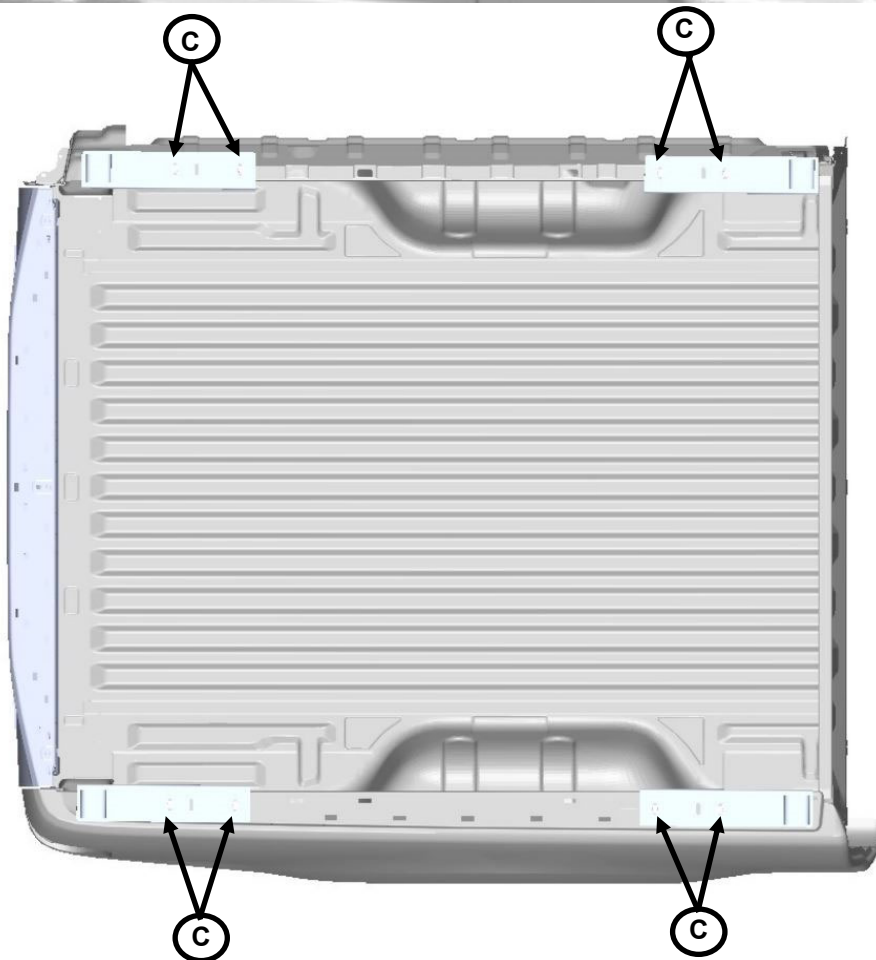
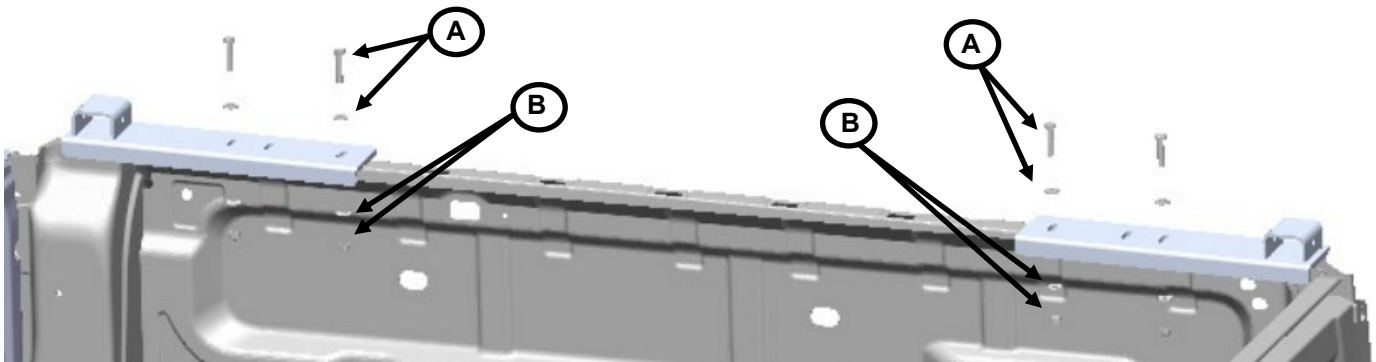


**Step 13** Bolting the mounting feet to the bed rails of RANGER.

A) Place (1) FAS0552 washer on each (8) FAS0242 bolt and insert bolts through the drilled holes.

B) Place (1) FAS0164 washer on each (8) bolt and thread (1) FAS0248 lock nut on each (8) bolt and tighten using a 1/2" & 9/16" socket.

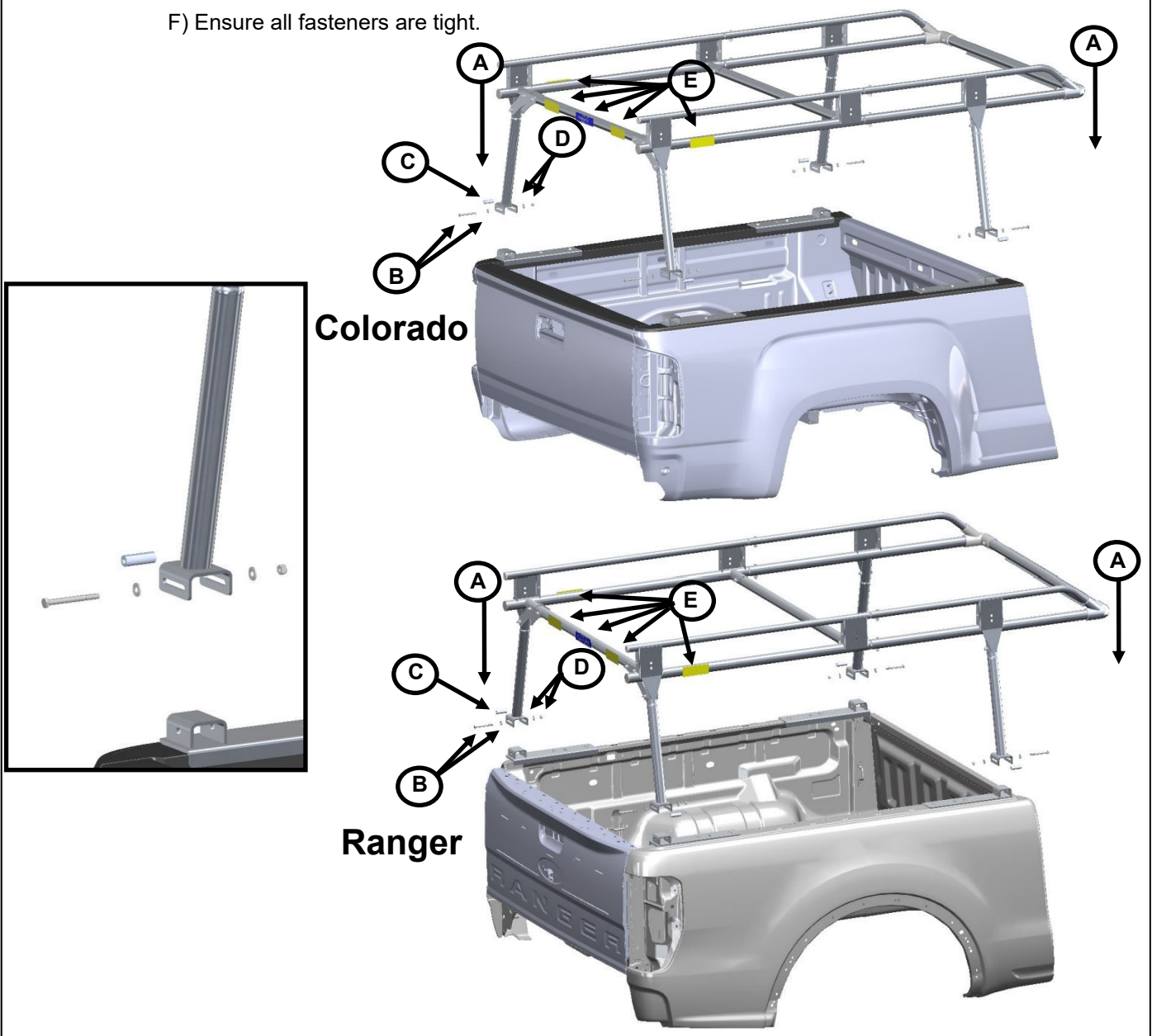
C) Ensure all (4) mounting feet are tightened to the bed rails.



**Step 14** Attaching the load runner to the bed.

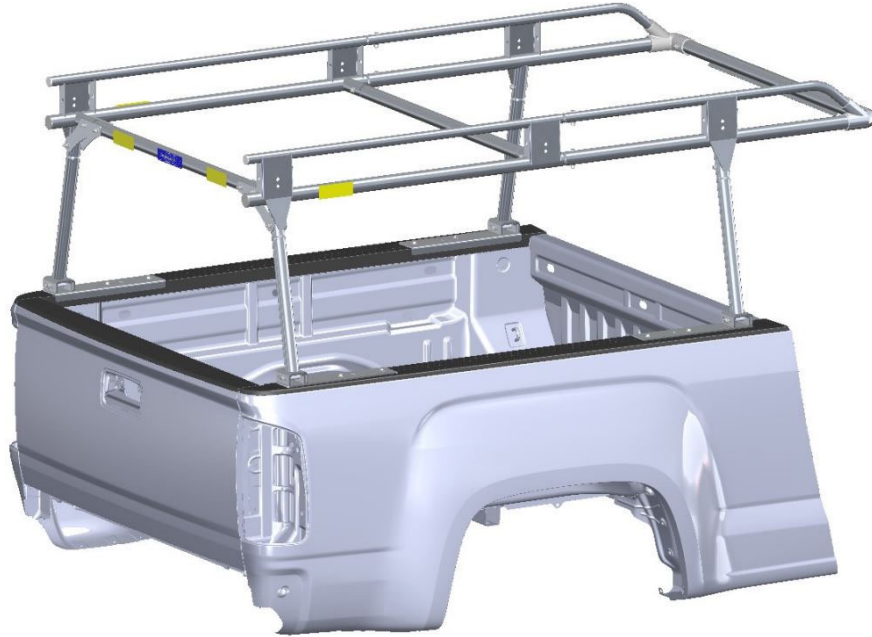
**\*NOTE: TO ATTACH THE LOAD RUNNER AND PREVENT DAMAGE AND INJURY, PARK ON A FLAT AND LEVEL SURFACE AND HAVE AT LEAST ONE PERSON PER CORNER TO LIFT THE LOAD RUNNER UP TO THE BED RAILS. COVER PAINTED VEHICLE SURFACES TO PREVENT SCRATCHING.\***

- A) Lower the load runner evenly onto the mounting feet.
- B) Place (1) FAS0552 washer on each (4) FAS0387 bolt.
- C) Position each (4) 59269 spacer in each post foot bracket and insert the bolts
- D) Place (1) FAS0552 washer on each (4) bolt and thread (1) FAS0248 lock nut on each (4) bolt, center the load runner on the truck bed and tighten using a 1/2" & 9/16" socket.
- E) Place 25689-0 Adrian Steel sticker centered on rear cross truss, and (1) warning sticker on each side of 25689-0, as well as on CS and SS rear side trusses.
- F) Ensure all fasteners are tight.



**Step 15** Your load runner installation is now complete!

**Colorado**



**Ranger**



**TOO MUCH LOAD WEIGHT CARRIED ON THE LOAD RUNNER WILL GREATLY INCREASE THE CHANCES OF A VEHICLE ROLLOVER! CHECK WITH THE VEHICLE MANUFACTURER FOR LOAD LIMITS! DOUBLE CHECK ALL FASTENERS LOCATIONS TO BE SURE THAT ALL FASTENERS ARE TIGHTENED TO SPECIFICATIONS. YOUR INSTALLATION IS NOW COMPLETE! STOW THIS COPY IN THE VEHICLE FOR FUTURE REFERENCES! ADRIAN STEEL COMPANY IS NOT RESPONSIBLE FOR DAMAGES DUE TO LOAD TYPE OR SIZE CARRIED ON THE LOAD RUNNER.**